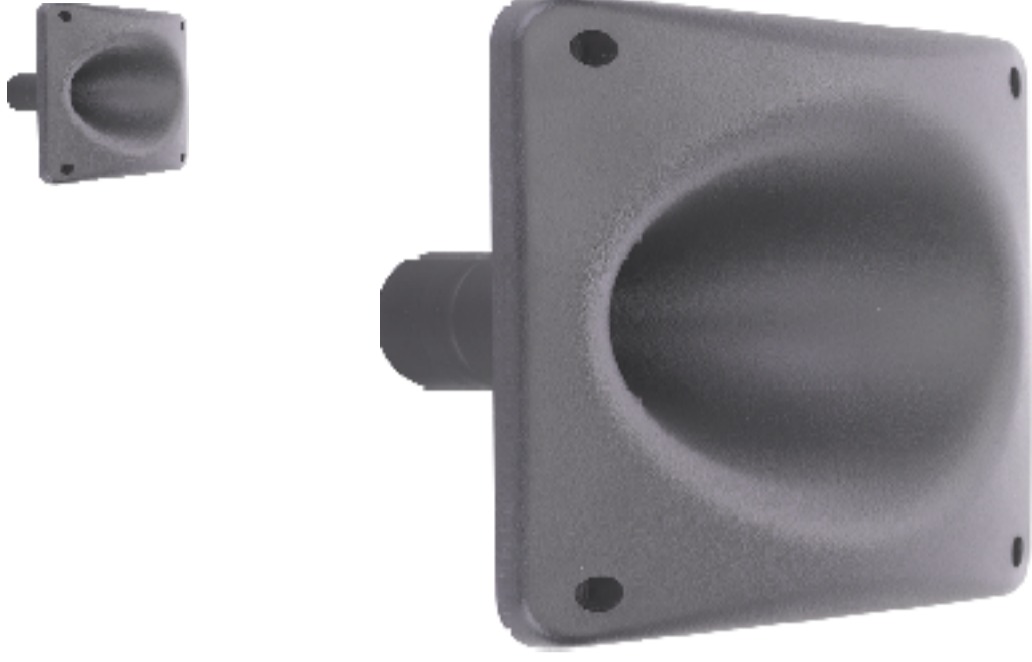


H1SC-8050



- Compatible for use with screw on compression drivers
- Hard wearing reinforced ABS

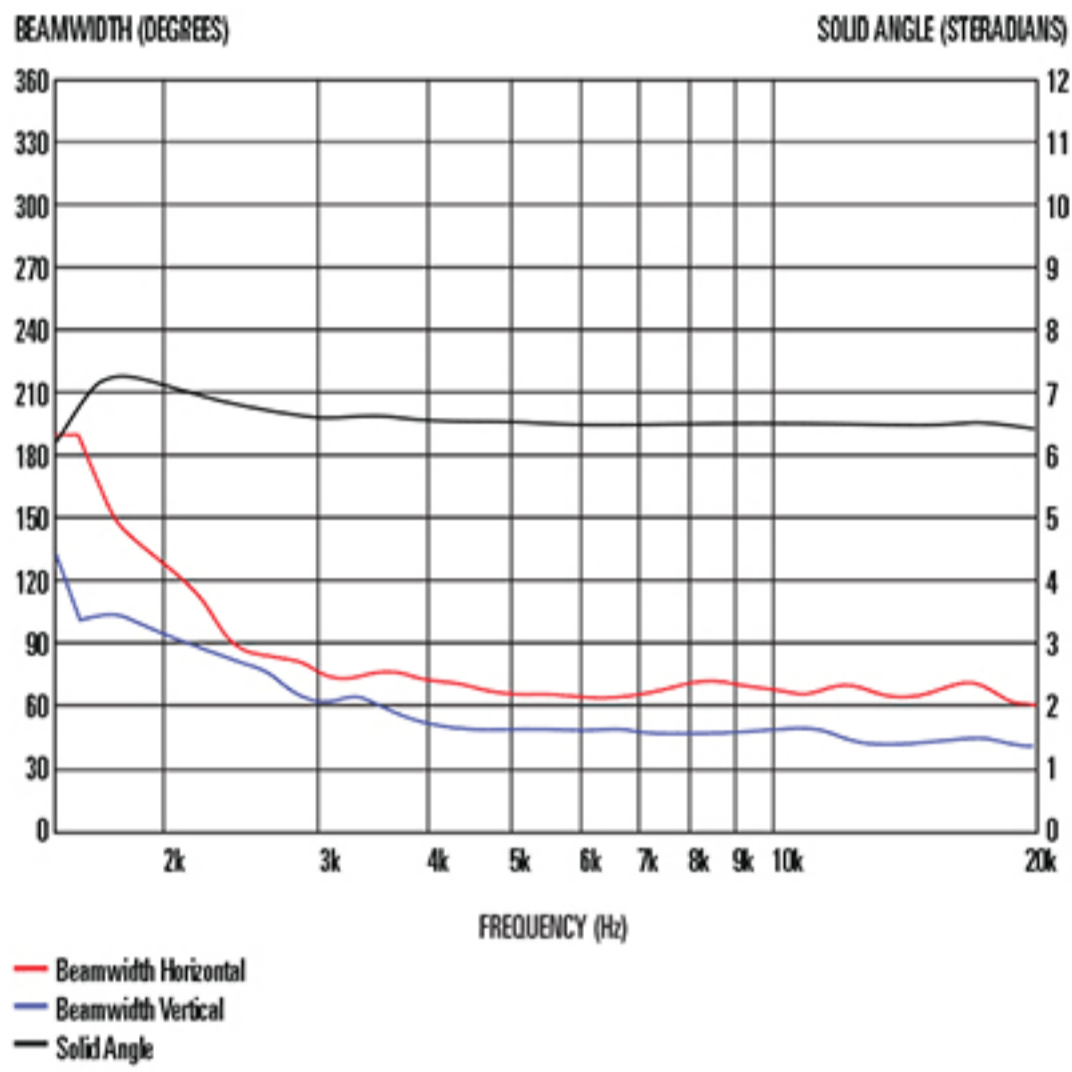
General Specifications

Horn type	Exponential
Radiation pattern	80° x 50°
Horn material	ABS
Baffle cut-out	155mm/6.1in
Driver mounting detail	Screw (35mm, 1.38in diameter)
Throat exit	25.4mm/1in
Height	178mm/7in
Width	178mm/7in
Depth	88mm/3.46in
Weight	0.2kg/0.44lb

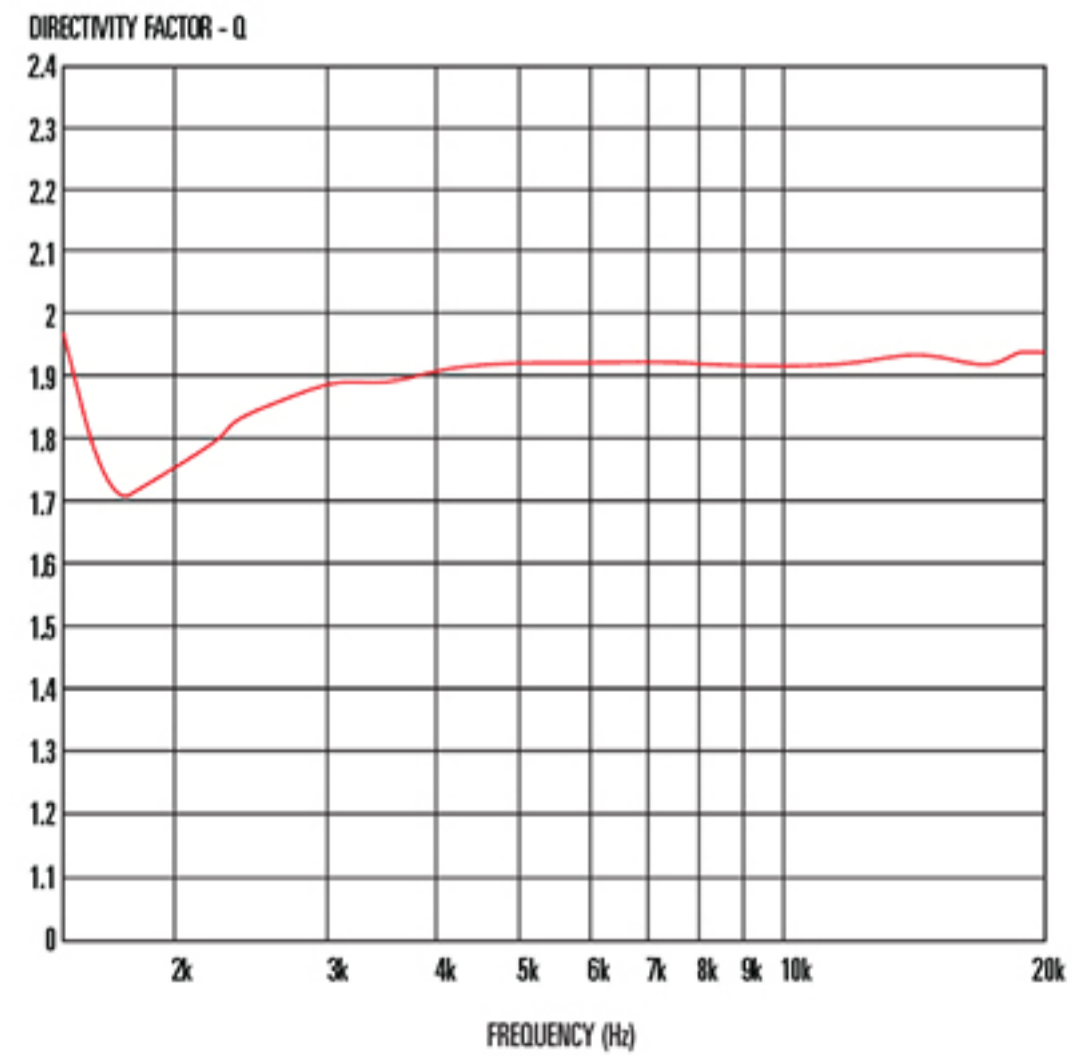
Packed Dimensions & Weight

Single pack size W x D x H	186mm x 186mm x 102mm /7.3in x 7.3in x 4in
Single pack weight	0.22kg/0.48lb

8 Frequency Response



Beamwidth and Solid Angle



Directivity Factor